



Minnesota's NEW Transition Framework

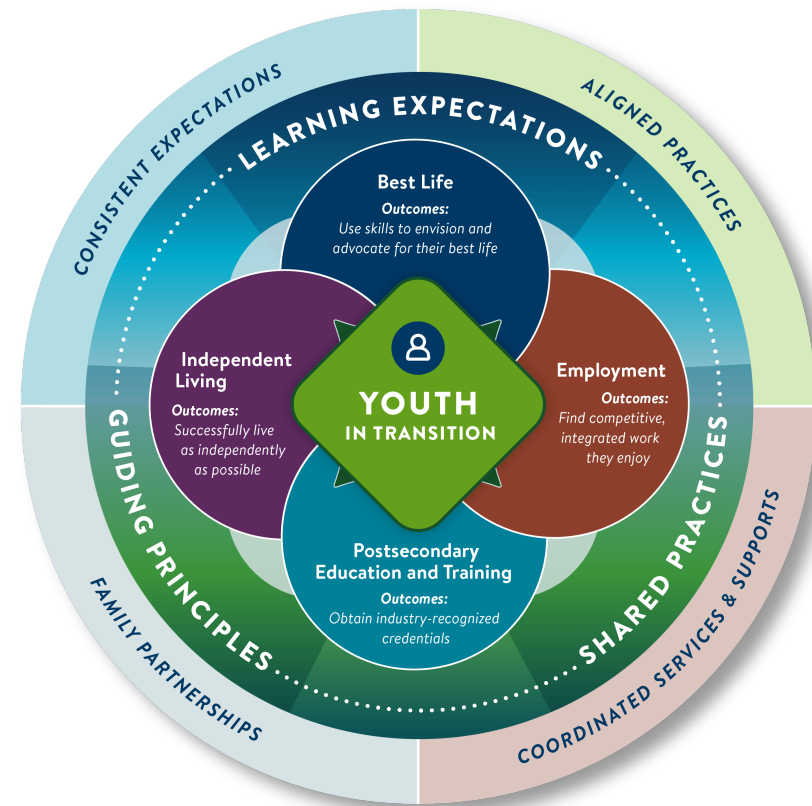
Keynote Presentation, Wednesday, April 17, 2024

Heather Kosec and Alyssa Klein

Introductions



Minnesota's transition framework defines high-quality transition planning and programming for youth with disabilities and those who support them.



E1MN: A STATE-AGENCY PARTNERSHIP ADVANCING EMPLOYMENT FIRST

Minnesota Department
of Human Services (DHS)

Minnesota Department
of Education (MDE)

Minnesota Department of
Employment and Economic
Development (DEED)



**Working together to
deliver a more seamless
and timely employment
support system**

Professional partnerships

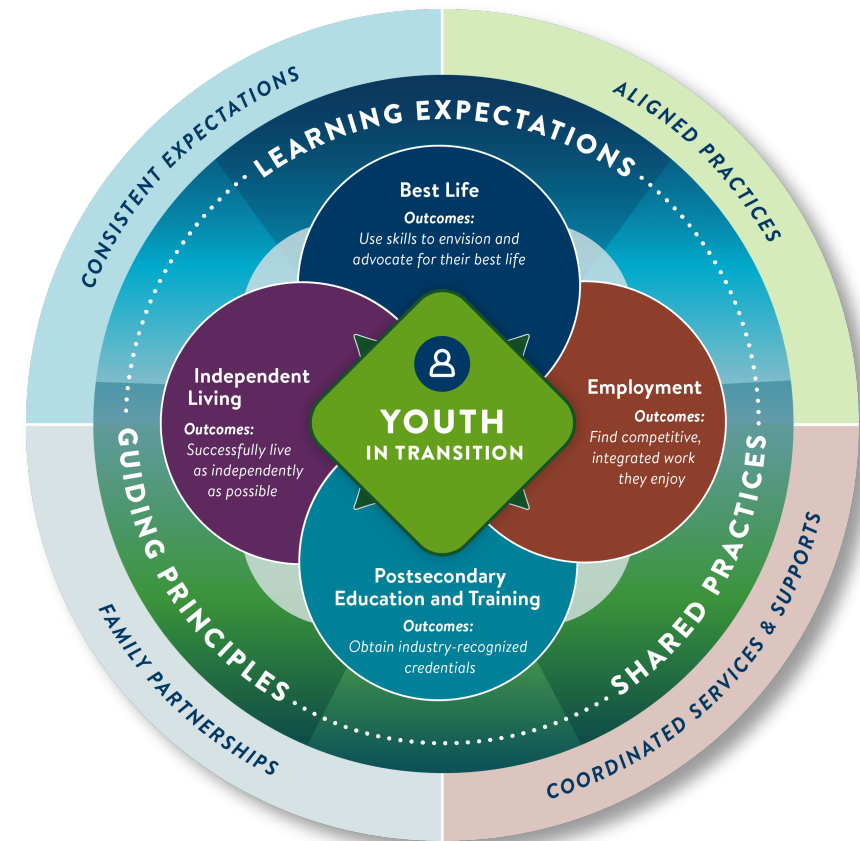
The framework strengthens the partnership between:

- Schools
- Vocational Rehabilitation Services (VRS)/ State Services for the Blind (SSB)
- Waiver (county/tribal nation) case managers
- Service providers



Minnesota's Transition Framework features three key elements:

1. Guiding principles
2. Shared practices
3. Learning expectations



1. Guiding principles

The framework's guiding principles are based on person-centered practices:

- The youth is at the center of transition planning.
- Families play a key role in successful transition outcomes.
- Transition planning should start early in a youth's life.
- High expectations matter.
- Strong partnerships support a smoother transition to adulthood.
- Success is measured by improved youth outcomes.



2. Learning expectations

Learning expectations define what students need to know to get to the outcomes of these four domains:

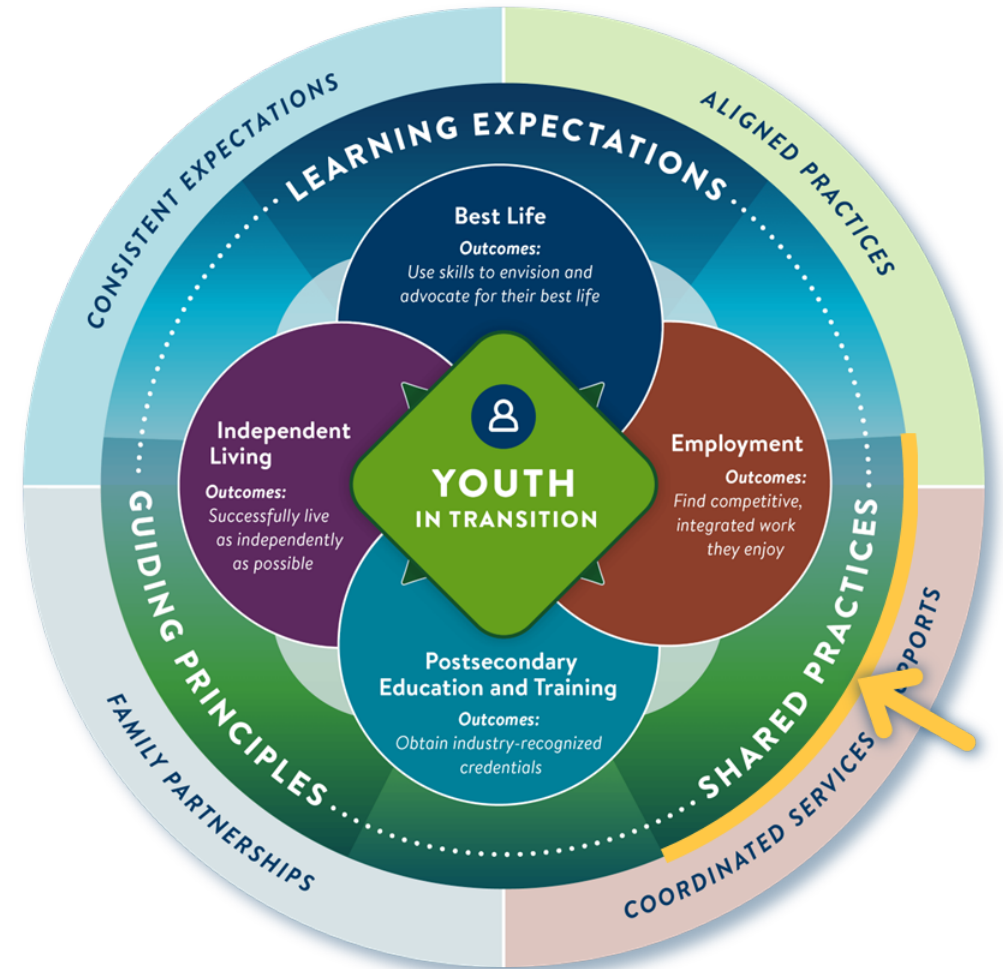
- My best life
- Independent living
- Post-secondary education and training
- Employment



3. Shared practices

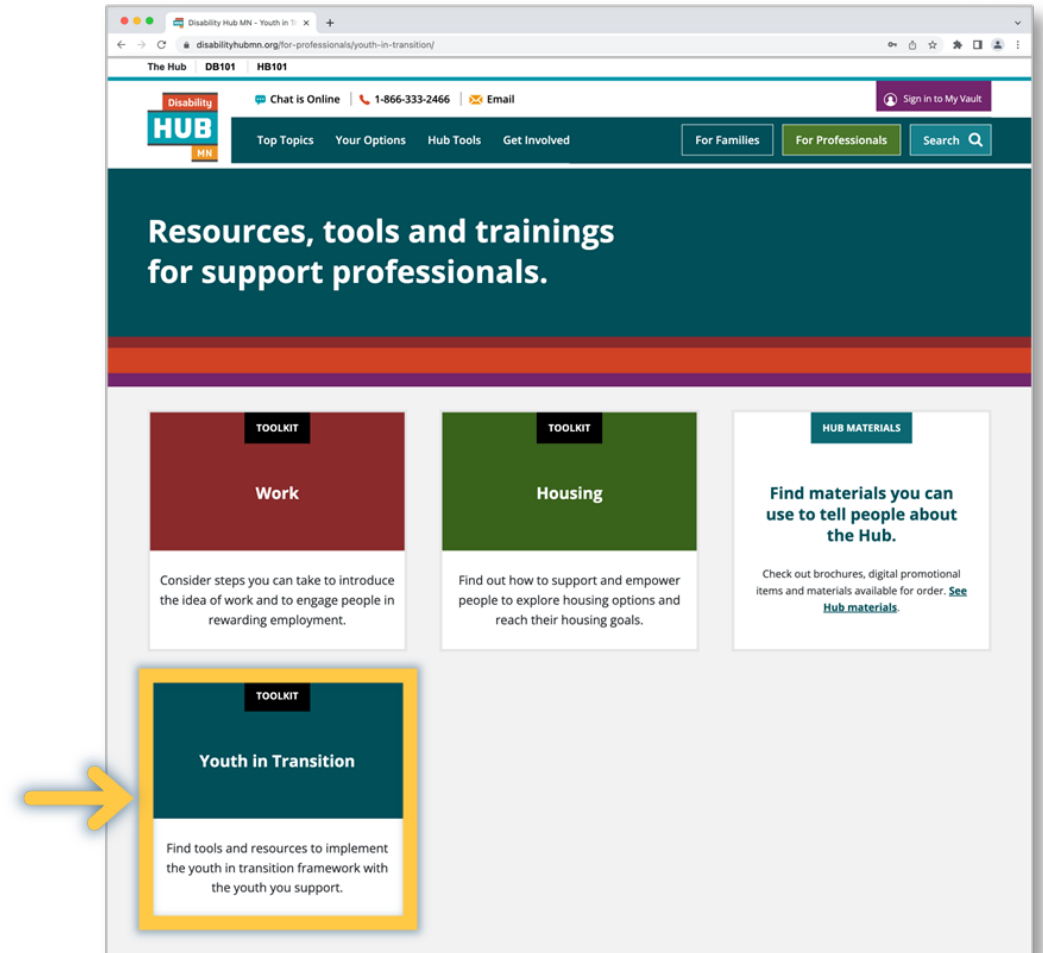
Shared practices ensure a consistent experience for youth and families while optimizing the role of everyone on the transition planning team.

- Person-centered practices
- Collaborative practices
- Youth planning process

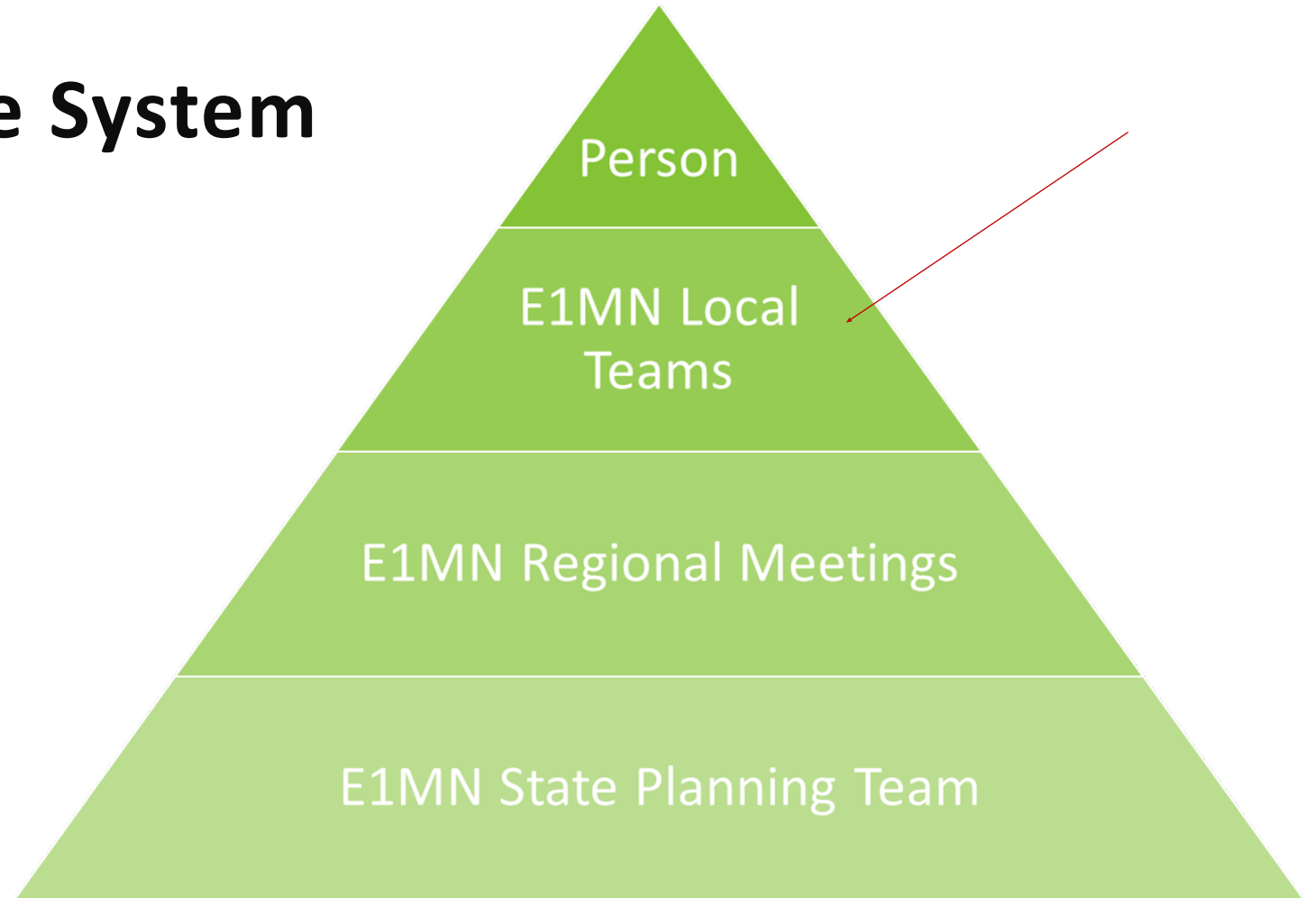


Youth in Transition Toolkit

The [Youth in Transition toolkit \(disabilityhubmn.org\)](https://disabilityhubmn.org) helps professionals implement Minnesota's Transition Framework.



Building a Statewide System



What is an E1MN Local Team?

- School district or charter school staff
- Vocational rehabilitation staff:
 - Vocational Rehabilitation Services (VRS)
 - State Services for the Blind (SSB)
- Waiver case managers
- Additional members as appropriate



What does an E1MN Local Team do?




- Work together to ensure all students with disabilities they serve get high quality transition services
- Meet regularly to coordinate services
- Complete self-assessment and implement strategies for system improvement
- Partner to make your jobs easier!

Foley's E1MN Local Team


Foley story
(disabilityhubmn.org)

SUCCESS STORY— E1MN COLLABORATION




E1MN is Minnesota's state agency partnership to advance Employment First outcomes for youth and adults with disabilities.

Professional spotlight:
Kelly Popp, Mary Keating, Amy Meyer



Supporting youth in transition

Foley's E1MN Local Team works together today for students' successes tomorrow



One spring day in 2023, Benton and Stearns County families visited a local college campus to learn about resources for youth with disabilities who are transitioning to adulthood.

"I got to talk to a lot of families that are with youth in transition," recounted **Amy Meyer, Benton County's Home and Community-Based Waiver Case Manager and E1MN Liaison**. "They were struck by the spectrum of services and supports available."

The event convened housing, county, mental health and other professionals in one spot to make it easy on youth and families. The fair was one way Foley's E1MN Local Team embodies [Minnesota's Transition Framework](#), meeting various organizations and learning about the services and supports available prepared the team to collaborate better going forward.

WHO'S WHO


Kelly Popp, Vocational Rehabilitation Counselor, Department of Employment and Economic Development, Vocational Rehabilitation Services

Mary Keating, Foley High School Special Education Teacher with 18- to 22-year-old program, Work-Based Learning Coordinator

Amy Meyer, Home and Community-Based Waiver Case Manager at Benton County and E1MN Liaison for Benton County

"We had this beautiful opportunity to engage with our community and the agencies that support it," said **Mary Keating, a Special Education Teacher and Work-Based Learning Coordinator at Foley High School**. "Families felt well-informed. They were excited about the opportunity that it was right here in Foley."

The Transition Framework helps the team rethink how they work to simplify their jobs and build for youths' future success in adulthood. It's part of Minnesota's [E1MN partnership](#), a way of working together to deliver a coordinated



E1MN | Success Story | Page 1

Call to Action

- Learn more about the [Transition Framework \(disabilityhubmn.org\)](https://disabilityhubmn.org)
- Discuss with your leadership and co-workers
- Learn about, join, form an E1MN Local Team
- Come to our breakout session: Resources in Minnesota's Transition Framework
- Contact us if you have questions!





Thank you!

Heather Kosec, Youth Services Manager, heather.kosec@state.mn.us

Alyssa Klein, Youth Services Coordinator, alyssa.klein@state.mn.us

