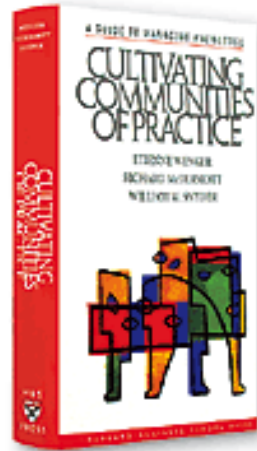


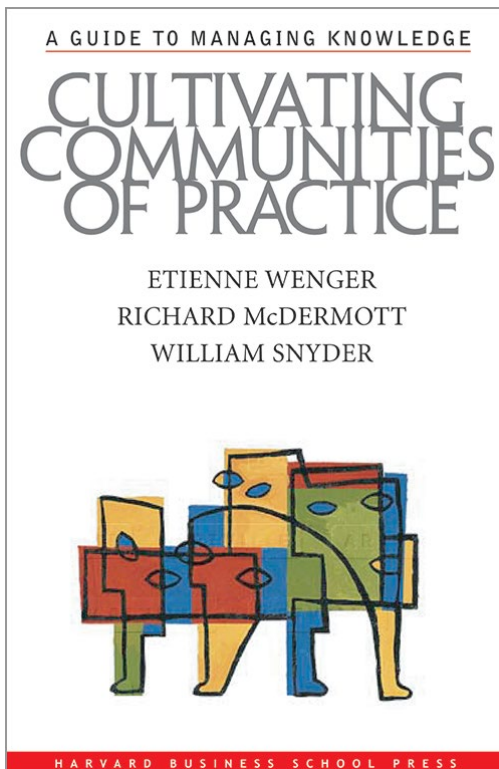


# Communities of Practice

## *Redefining Domains*



# Review “What is a CoP?”



Communities of Practice are groups of people who share a concern, a set of problems, or a passion about a topic, and who deepen their knowledge and expertise in this area by interacting on an ongoing basis.

# What is a Community of Practice

Domain



```
graph TD; Domain[Domain] --> Text; Practice[Practice] --> Text; Community[Community] --> Text;
```

Communities of Practice are groups of people who share a concern, a set of problems, or a passion about a topic, and who deepen their knowledge and expertise in this area by interacting on an ongoing basis.

Practice

Community

# What is a Community of Practice

- Domain
  - Shared identity defined by interests
  - Key issues or problems members commonly experience
  - Well defined and specific yet long lasting (3+ years dedication)
- Community
  - Meets regularly (virtual or in person)
  - Large or small groups (sub groups within large groups)
  - Openness for communication in CoP and outside of CoP
- Practice
  - Balance between learning and production
  - Documentation of learned best practices



# What topics interest you?

- Paper & Pen
- Write down up to two topics from Charting the Cs you would like to focus on



# Small Group Discussions

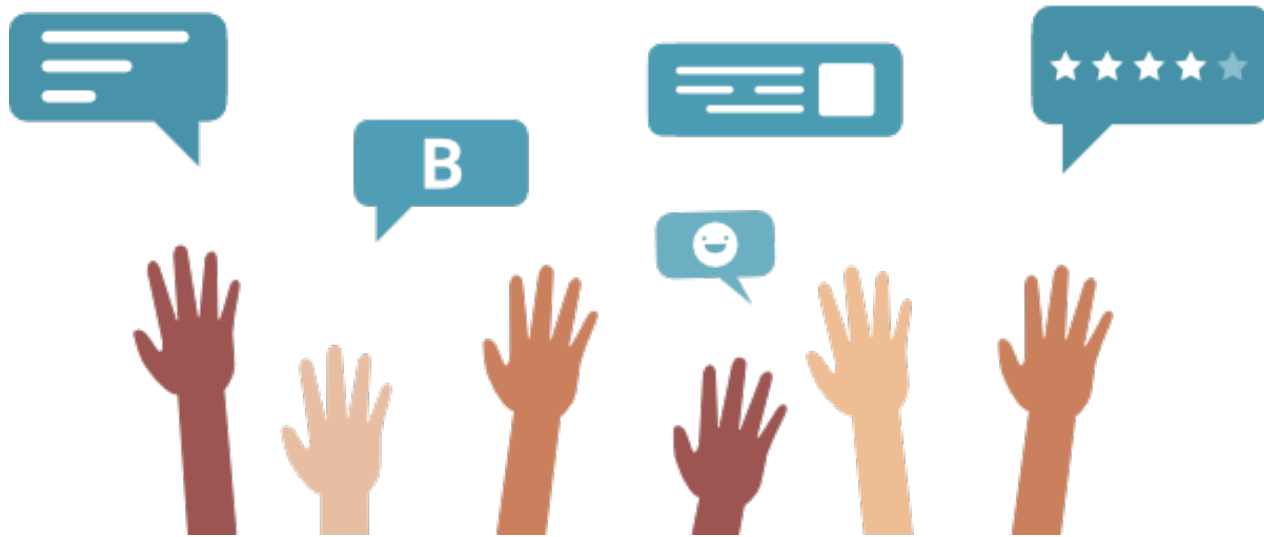
- Get Jamboard link

<https://jamboard.google.com/d/17ItmXWcL1b3jPTcn9YFGnFSdPo70KtLJgaBSxJpjL-Q/edit?usp=sharing>

- Add ideas on different sticky notes & everyone briefly discuss
- Together cluster the big issues into categories based on similar topics, title the cluster

# Large Group List

- Together as a large group make one list of topics to focus on



# Resources

- Wenger, E., McDermott, R. A., & Snyder, W. (2002). *Cultivating communities of practice: A guide to managing knowledge*. Boston, MA: Harvard Business School Press.





# Thank you!

Kayna Plaisted

[Kayna.plaisted@metroecsuo.org](mailto:Kayna.plaisted@metroecsuo.org)

612-638-1538

This initiative is made possible in whole with a grant from the Minnesota Department of Education using federal funding, CFDA 84.027A, Special Education – Grants to States. This event does not necessarily represent the policy of the federal Department of Education or the state Department of Education. You should not assume endorsement by the federal or state government.